



All A
STYLE IN
YO
TO KNO

FALL FASHION PREVIEW

Crisp Shirts, Sporty Coats,
Easy Knits, and Sneakers

Y
B
M

WHEN CULTURAL CALENDAR

9th

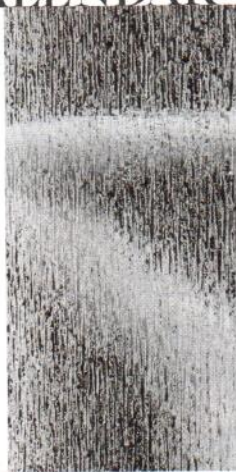
BUILD IT AND THEY WILL COME

The Japanese architect Shigeru Ban has created humanitarian shelters for disaster sites in New Zealand, China, and Japan; conceived a nomadic exhibition space that traveled around the world; and collaborated on the Centre Pompidou outpost in Metz, France. Now comes the first permanent museum the 2014 Pritzker Prize winner has designed on his own: the \$45 million Aspen Art Museum, set against the striking mountains of Colorado, which opens on August 9 to coincide with the institution's 35th anniversary. FAN ZHONG



Above: A model of the Aspen Art Museum; a 1960 piece by Yves Klein in the opening show.

Works from the exhibition "Christopher Williams: The Production Line of Happiness" at MoMA.



1st

SEEING IS BELIEVING

The artist Christopher Williams makes images that look as any luxe advertising photograph, yet the model's bra are visible, or a color chart hovers over conventions of photo production and distribution overdrive by digital media. "Everything is false," Williams, whose first museum retrospective, "Christopher Williams: The Production Line of Happiness," is at New York's Museum of Modern Art, says. "The world still provides us with this space to sleep." Williams has also designed an idiosyncratic layout for a documentary by Anne-Marie Miéville and Jean-Luc Godard. "Every square inch is just filled with the same, of course, can be said of Williams's own work."



1st

HO PARTICI